



# 4G/GSM alarmsender Holars 8 innganger



## Product Information

Our Auto Dialler is a versatile unit which can be attached to many of your electronic devices in your homes; work, gardens or wherever you may need it. It will alert you using GSM technology by sending you a text message or phone call to your mobile phone or land line. Therefore alerting you immediately to a problem, failure or status change wherever you are in the world!

Our Auto-Dialler is set apart from other models on the market by being on the quad band frequency meaning it can be used worldwide and we frequently ship models all over Europe, USA and Australia with excellent feedback.

The unit is also enclosed in a IP65 rated box which means it is perfectly weathered for outside installation and has passed testing in high temperature and below freezing Conditions.

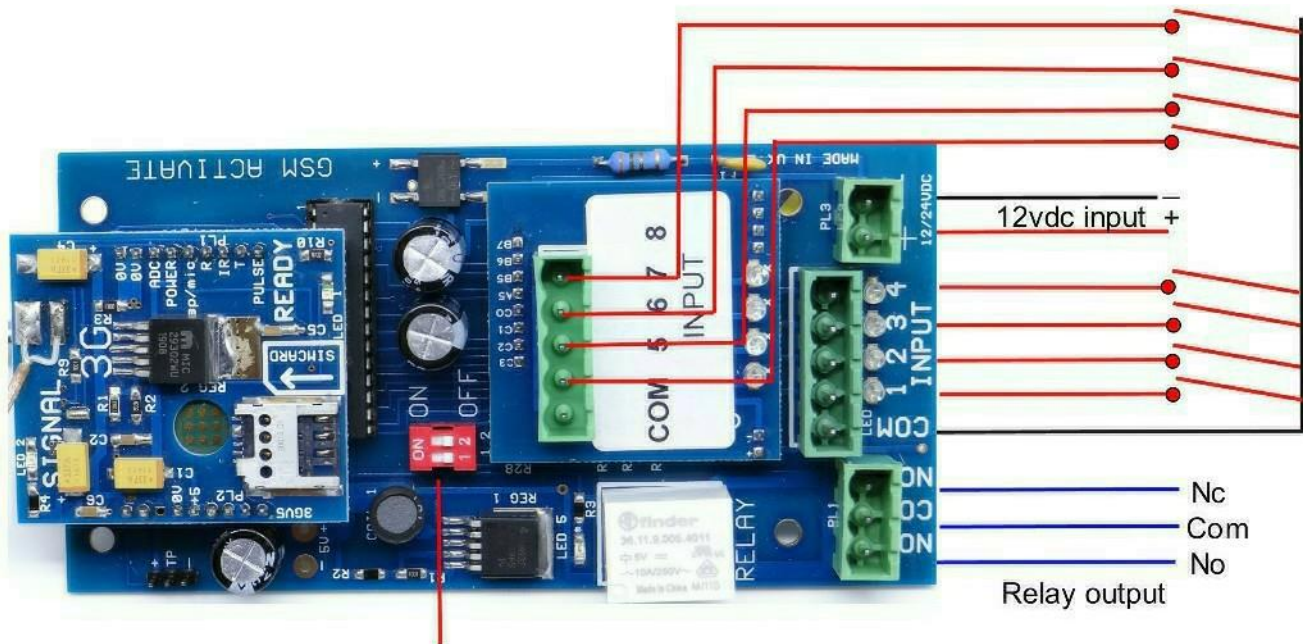
## Product Specification

- GSM Frequency: Quadband freq 850/900/1800/1900
- 4G Bands: B1, B3, B5 - B8 , B20 (other bands available on request)
- Power Supply Voltage: 9-24 volts DC - 1 Amp Max
- Current Used in Standby Mode: 60mA Max
- IP65 Rated Enclosure for outside installation
- 8 Inputs Neg Triggered (open and close detection)
- 8 Amp Relay Output
- Micro Simcard
- No Landline Required
- Dimensions - L150 x W90 x H45mm
- Dimensions PCB Only - L125 x W67mm
- Sim Active Function
- Operating Temperature: -10...+40°C
- Programmed by SMS/Text Message
- Text to test signal Strength

## SIM Active Function

Our GSM Auto Dialler comes with a SIM Active function meaning that it will send a message every six weeks to a preprogrammed number we at GSM Activate own to prevent the SIM card being shut down due to inactivity.

# INSTRUCTIONS



Dipswitch 1 off = 2G  
Dipswitch 1 on = 3G

3g Model only

## IMPORTANT - PLEASE READ

Please make sure you disconnect the power when you fit the simcard. Then slide the simcard into the holder making sure that the clipped corner of the simcard lines up with the clipped corner of the simcard holder as seen in the image above.

### SIM Active Function

Our GSM Auto Dialler comes with a SIM Active function meaning that it will send a message every six weeks to a preprogrammed number we at GSM Activate own to prevent the SIM card being shut down due to inactivity.

### Signal Strength

To help make sure that you place the unit in a suitable position you can text the unit to see how much signal strength the dialler is receiving by texting the command `#SIGNAL#`

The dialler will perform a test on the signal strength.

You will receive a text telling you a signal strength score between 0 up to 30 we strongly recommend that you place the unit where you can receive a signal strength score of at least 10. You will find that with a score of less than 10 the unit will be unreliable.

### Please Note

For ease of use, we have colour coordinated the # (hash) and = (equals) symbols.

## Dipswitch

The dialler can work on 2G or 4G networks. The module works worldwide with all simcards (see page 3 for applicable bands). You can choose which frequency the unit will use at the start by using the dipswitch combinations below

1 - Dipswitch 1 Set to OFF & Dipswitch 2 Set to OFF= Unit boots up in 2G

2 - Dipswitch 1 Set to ON& Dipswitch 2 Set to ON = Unit boots up in 4G

Note if you have ordered a 2G only dialler it will only work on 2G

## Programming the Contact Numbers

After inserting your simcard into the Auto Dialler turn the unit on and wait until you see the **GREEN** LED is on. This will indicate the you have a mobile signal and the unit is ready for use.

You will now need to send a text with the contact numbers (maximum 5 contact numbers).

To avoid confusion we have colour coded the (#) **hash** and (=) **equals** symbols.

Example (**hash**) (1,2,3,4 or 5) (**equals**) (phone number) (**hash**)

**#1=07123456789#** send this as a text to the simcard number in the unit for contact no:1

**#2=07234567891#** send this as a text to the simcard number in the unit for contact no:2

**#3=07345678912#** send this as a text to the simcard number in the unit for contact no:3

**#4=07456789123#** send this as a text to the simcard number in the unit for contact no:4

**#5=07345678912#** send this as a text to the simcard number in the unit for contact no:5

Please exchange the mobile numbers for your contact numbers

If you wish to cancel a number follow this example

Example: (**hash**) (1,2,3,4 or 5) (**equals**) (DELETE) (**hash**)

**#1=DELETE#** This deletes contact number 1

## IMPORTANT - PLEASE READ

Please one message at a time and wait for the Auto Dialler to respond with a text message acknowledgment "NUMBER STORED" before you try to add another number.

Below is a notepad to help you to remember which numbers you have saved to which location in the event you need to modify or delete them in the future.

**#1=\_\_\_\_\_#**

**#2=\_\_\_\_\_#**

**#3=\_\_\_\_\_#**

**#4=\_\_\_\_\_#**

**#5=\_\_\_\_\_#**

## How to programme the SMS/Text message

You can now change the alarm message for inputs to your own choosing. You can have a separate message for open and closed operations.

To change the message send the text command as follows.

**#MESS1A=YOUR MESSAGE#** The default message is - **input 1 open**

**#MESS1B=YOUR MESSAGE#** The default message is - **input 1 closed**

**Continue this for all message options to message 8**

**#MESS8A=YOUR MESSAGE#** The default message is - **input 8 open**

**#MESS8B=YOUR MESSAGE#** The default message is - **input 8 closed**

IMPORTANT - You can only use upto 30 characters per message stored

## Telephone Call Alerts

The Auto Dialler can be programmed to send you a telephone call after each text alarm has been sent.

You will receive approximately three ring tones. The unit will then hang up automatically. This is to prevent call charges being incurred.

To set call alerts to ON please send the text message

**#CALL=ON#**

The unit will text a response back to you reading "call on"

To disarm call alerts please send the text message

**#CALL=OFF#**

If the call function has been set to ON you will receive a text message and shortly after a phone call.

## How to use the GSM Auto Dialler

The Auto Dialler has eight independent input's

### Main Board

**Input 1** = Terminal 1 connection. (Negatively triggered) pulled to ground

**Input 2** = Terminal 2 connection. (Negatively triggered) pulled to ground

**Input 3** = Terminal 3 connection. (Negatively triggered) pulled to ground

**Input 4** = Terminal 4 connection. (Negatively triggered) pulled to ground

### Piggy Back Board

**Input 5** = Terminal 5 connection. (Negatively triggered) pulled to ground

**Input 6** = Terminal 6 connection. (Negatively triggered) pulled to ground

**Input 7** = Terminal 7 connection. (Negatively triggered) pulled to ground

**Input 8** = Terminal 8 connection. (Negatively triggered) pulled to ground

### Important - Please Read

Information on pulled to ground and pulled to high input or open circuit can be found below.

#### Pulled to Ground Input

When the inputs are triggered by pulling to ground the **green** LED will flash 4 times to indicate that a trigger has been received and it will send a response text message "input closed" to the stored user numbers. It will also call if the call function has been enabled

#### Pulled to High Input or Open Circuit

When an input pin goes from closed to open or low to high state, the **green** LED will flash 4 times to indicate that a trigger has been received. It will send a response text message "input open". It will also call the stored number if the call function has been enabled

Please Note - All inputs can be triggered independently.



## How to use the Relay Output

The Auto Dialler has an 8 amp volt free contact relay output. This can be used to switch on external electric devices such as lighting, sirens etc.

By texting the unit you can turn the relay ON or OFF. Below are examples on how to do this.

#REL=ON# This will turn on relay output

#REL=OFF# This will turn off relay output

After each operation the unit will reply with a status report "RELAY ON/OFF"

It is also possible to pulse the output relay for a period of 20 seconds. You will need to send the text message as follows.

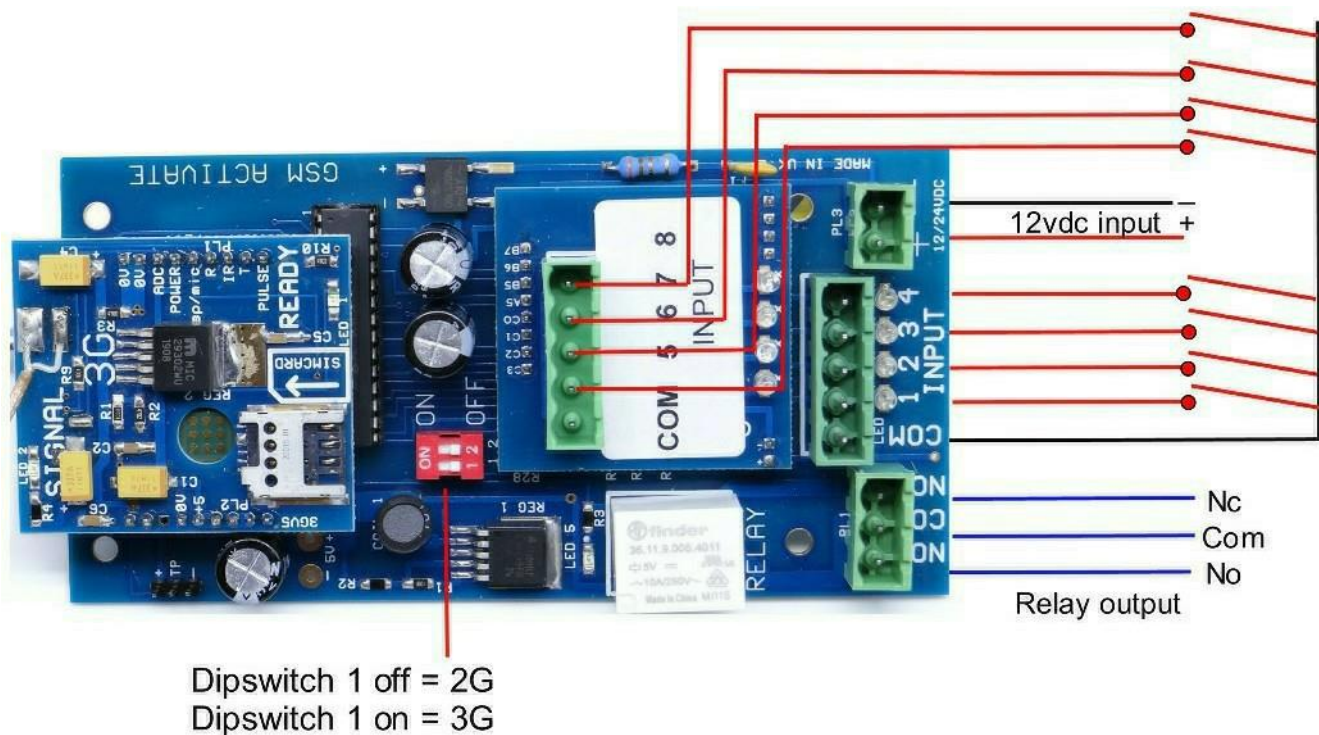
#PULSE=REL# This will Pulse the relay for 20 seconds.

## Resetting the Unit

To reset the unit back to the factory settings, you will need to send the text message

#RESET#

Please Note - This will reset all of your parameters. Only send a reset command when necessary. The GREEN LED will flash 8 times.



For alarm installations, please make sure you only supply a 9-24 volts DC from the battery terminals via the 2 amp fuse.

## Quick Reference

SEND TEXT	OPERATION	ACKNOWLEDGMENT
#MESS1A=MAX19CHARACTER#	Stores a custom message for input 1 open	Message 1 Stored
#MESS1B=MAX19CHARACTER#	Stores a custom message for input 1 close	Message 1 Stored
#MESS2A=MAX19CHARACTER#	Stores a custom message for input 2 open	Message 2 Stored
#MESS2B=MAX19CHARACTER#	Stores a custom message for input 2 close	Message 2 Stored
#MESS3A=MAX19CHARACTER#	Stores a custom message for input 3 open	Message 3 Stored
#MESS3B=MAX19CHARACTER#	Stores a custom message for input 3 close	Message 3 Stored
#MESS4A=MAX19CHARACTER#	Stores a custom message for input 4 open	Message 4 Stored
#MESS4B=MAX19CHARACTER#	Stores a custom message for input 4 close	Message 4 Stored
#SIGNAL#	Gives a Signal Strength Test	Score of 1-30
#1=NUMBER#	Saves Contact Number 1	Number Stored
#2=NUMBER#	Saves Contact Number 2	Number Stored
#3=NUMBER#	Saves Contact Number 3	Number Stored
#4=NUMBER#	Saves Contact Number 4	Number Stored
#5=NUMBER#	Saves Contact Number 5	Number Stored
#1=DELETE#	Deletes Contact Number 1	Number Deleted
#2=DELETE#	Deletes Contact Number 2	Number Deleted
#3=DELETE#	Deletes Contact Number 3	Number Deleted
#4=DELETE#	Deletes Contact Number 4	Number Deleted
#5=DELETE#	Deletes Contact Number 5	Number Deleted
#REL=ON#	Turns On Relay Output	Relay On
#REL=OFF#	Turns Off Relay Output	Relay Off
#AUTO=ON#	Turns Auto Relay Trigger On	Auto On
#AUTO=OFF#	Turns Auto Relay Trigger Off	Auto Off
#PULSE=REL#	Pulses Relay Output for 20 Seconds	Relay Pulse
#CALL=ON#	Switches Text & Call Alerts on	Call on
#CALL=OFF#	Text Alerts Only	Call off (default)

### Different Plug In Boards

Different plug in boards are available to purchase from our website or by calling or emailing the sales team on the below contact details. These add the following functionality to the Auto Dialler

8 Input Auto Dialler - high and low triggering

Speech Auto Dialler with recorded message

Wireless Auto Dialler with 120ft range wireless sensors

For more information check out our websites

[www.holars.se](http://www.holars.se) / [www.holars.no](http://www.holars.no)

[info@holars.se](mailto:info@holars.se) / [info@holars.no](mailto:info@holars.no)

**08-68409910 / 63961700**